



Theatre Technical Specifications

As at January 2014

Contacts

Technical Manager: Steve Wickenton

Phone number: (03) 9754 8723

Fax number: (03) 9754 8523

Email address: steve@burrinja.org.au

Venue Manager: Toni Kirk

Phone number: (03) 9754 8723

Fax number (03) 9754 8523

Email: tonik@burrinja.org.au

Technical Information

Approximately 2- 4 weeks before your event the Venue Manager or Technician will contact you to arrange a Pre-Event meeting to discuss the technical and operational requirements for your event. Please make sure that a person who knows what is required technically is able to attend that meeting.

Bump-in and Bump-out

Please ensure the time you have booked the venue for allows enough time for bump-in, tech rehearsals, performance and bump-out. If you think you will require longer please advise the Venue Manager. You will be charged for additional hours at the published hourly rate.

Please ensure that you take all your belongings with you at the end of your event. Burrinja does not have any space to storage things for you. If props/set/costumes are left in the venue for longer than 24 hours without prior arrangement with the Venue Manager then they will be thrown out. Burrinja may charge the hirer a removal or storage charge.

Loading Bay

The loading bay is located on Matson Drive, entering an internally structured loading dock with direct access to the staging area of the auditorium.

The use of the loading bay for 'bump-in' can only take place as follows:

- Weekdays: Between 7.00am until one hour prior to the start of a performance
- Weekends/Public Holidays: Between 9.00am until one hour prior to the start of a performance

Use of the loading bay for 'bump out' following the end of a performance must only take place as follows:

- Must be completed by 1.00am
- Must be conducted under the supervision of Centre staff who will be responsible for the minimisation of any noise during bump out.
- Access to the loading dock will be restricted to one truck any one time.
- Maximum size of the trucks entering the loading dock will be 8 metres.
- No goods or materials shall be stored or left outside the building, visible to the public.

Stage Door

The Stage Door is located next to the loading bay and there is a drop off area. We ask that hirers using the Stage Door have a person staffing that door to ensure that only authorised people enter and exit through this door. This person must not be engaged in any other activities that may mean they are distracted from supervising this door. If the Hirer is unable to provide a person to do this Burrinja will supply a staff member to manage the stage door. This will be charged at \$38+ gst an hour.

Green Room

If you have booked the main theatre you will have access to the Green Room for your event. There is a fridge and tea and coffee making facilities. Please remember to bring your own supplies. Alcohol not purchased through Burrinja is not permitted to be consumed in the Green Room. Please advise the Venue Manager if you require alcohol in the Green Room and we will purchase this on your behalf and charge it back to you at cost.

Burrinja has a washing machine & dryer and iron and iron board.

Any acts of vandalism or destruction of Burrinja property will be charged to the Hirer at the cost to repair, replace or make good.

The Technician

The venue will be set up with the standard lighting rig. As part hiring fee the technician will be able to make minor modifications to this lighting rig. If you require a different lighting rig a lighting plan must be provided at the Pre-Event meeting. If it is determined at the Pre-Event meeting that additional technical hours will be required to pre-rig and de-rig for your event then we will agree with you any additional technical hours and charge these to you as agreed.

The Technician will be required to be on site for length of your hiring. This will be charge at \$40+ gst an hour. Any additional hours will be agreed and charged for.

Burrinja's Technician can undertake the operating technician's role for your event or you can provide your own technician who has been approved by Burrinja's Venue Technician. Burrinja's Technician will still be required to be on site throughout the hiring and be charged to the Hirer.

The Technician is present to provide technical support throughout your event. They are also there to ensure the safety of your crew, to ensure that work is carried out safely and to give you the benefit of their knowledge of the venue. The Technician will give you an OH&S induction to the building during your bump-in.

Please make sure that you have sufficient people available for bump-in, stage management, bump-out etc. The Technician is not able to act as another crew member for you, unless previously agreed and it has been agreed that this can be accommodated within your booking hiring.

Lighting Catwalks

All persons accessing the lighting catwalks must be accompanied by the Venue Technician and have had an OH&S induction into safe working on the lighting catwalks. Anyone accessing the lighting catwalks must abide by Burrinja's OH&S Guidelines and Venue Operations plan.

Accidents

Working in a theatre is a hazardous workplace and accidents can happen. The Theatre Technician will give you an OH&S induction at the start of your hiring. Please make sure you notify the Technician or Duty Manager of any accidents so that they can be recorded. This helps us to improve our operations.

Naked Flame/Pyrotechnics

The use of naked flames/pyrotechnics is prohibited unless prior written approval by the Venue has been sort. **All requests for this must be in writing** and must include details of:

- Your planned use of naked flames/pyrotechnics
- Your safety plan/risk assessment including details of fire blankets, buckets of sand, fire monitor etc.
- Your contact name, address, phone number and email address

Please send your request to: Venue Manager, Burrinja, 351 Glenfern Road, Upwey. 3158

Or email to: tonik@burrinja.org.au

Bringing in additional equipment

All additional equipment must be test and tagged prior to it coming into the venue. You must seek permission from the Venue Technician to bring in any additional equipment into the venue.

Technical Specifications

Main Theatre

Stage

Brief Stage Description: Un-raked, un-raised, without a proscenium arch. The floor is sprung with a black finish. Hanging facilities are by Tri Truss on dollies. There is a crossover behind stage wall with access to dressing rooms.

Stage rake: NONE

Stage Dimensions:

Width: 14 m with legs out. Legs are on a pivot arm. With legs fully extended stage width is 10m.

Height: 7.5 m from stage floor to bottom of Catwalk.

Setting Line:

The SL is 9 metres from the cyclorama wall.

Distance From: (*SL = Setting Line, CL = Centre Line*)

SL to DS edge of apron: 2m (can be extended to 3.5m on arrangement)

SL to rear wall: 9.3 m

CL to OP wall (or obstruction): 7 m

CL to PS wall (or obstruction): 7 m

Stage to underside of catwalk: 7.5

Auditorium: Upper and Lower level seating with removable balcony options.

Seating capacity: 300 (400 on approval by management)

Seating capacity with vomitory out: Max: 384

Note: use of vomitory removes 16 seats from rows AA, BB, A&B

Seating capacity with extended apron: Max: 364

Note: use of extended apron removes rows AA & BB

No Orchestra lift/pit

Flying Facilities: no traditional fly facilities

Rigging System:

3 x 10m Tri Truss lengths horizontal above LX bars, on dollies that are fully rigable and able to be set anywhere between the cyc wall and the S.L.

Drapery:

| Type | Material | Colour | Width | Height | Quantity |
|---------------|----------|--------|-------|--------|----------|
| House Curtain | Wool | Black | | 9.5m | 2 |
| Legs side | Wool | Black | | 7.5m | 4 each |
| Blacks | Molten | Black | 3m | 9.5m | 6 |

House Curtain is operated by manually pulley system PS
Legs are able to slide up and down stage on tracks as well as swing in and off stage. They are not removable.

Blacks are hung with Velcro tabs from the tri truss on dollies

Access Equipment: No Elevated Work Platform
All rigging from Catwalks Lighting bridge, Tech Balconies and Balcony.

Loading Dock:

Access: Truck access from Matson Drive with direct access to staging area.
Loading Dock Height: Loading dock has a leveller platform
Door Dimensions: 2.8 m High and 1.9 m Wide
Restrictions / Obstructions: For Bump-ins, loading bay can only be used on weekdays from 7:00am and weekends from 9:00am until 1 hour prior to performance. Bump-outs must be completed by 1:00am. Access is restricted to one truck at a time.

Staging Notes: All flown items must be rigged with rated equipment and is subject to approval by a venue representative.

Scenery, backdrops or any other material must not be attached or placed against the rear stage cyc wall under any circumstances.

Lighting

House Lighting:

Independent control: Yes

Control position: Control Desk

Fade time adjustable: No. Has variable dimming: 100%; 65%; 35%; 10%

Positions:

Stage LX Bars: Fixed multiple uni-strut from catwalks and lighting bridge
See hanging plot for standard LX bar locations

FOH Lighting Bridge 1 (FOH LX)

Setting Line to lighting bar: Lower Bar is 9.4 m at 37 degrees

Usable bar width: 14 m

Note: This point consists of 2 bars with one sitting approx. 60 cm above the lower.

Catwalk 1 up stage side (LX1)

Setting Line to lighting bar: Lower Bar is 7.5 m at 1.5 degrees

Usable bar width: 14 m

Note: This point consists of 2 bars with one sitting approx. 60 cm above the lower.

Catwalk 1 down stage side (LX1A)

Setting Line to lighting bar: Lower Bar is 7.7 m at 12 degrees

Usable bar width: 14 m

Note: This point consists of 2 bars with one sitting approx. 60 cm above the lower.

Catwalk 2 up stage side (LX3)

Setting Line to lighting bar: Lower Bar is 9.8 m at 40 degrees

Usable bar width: 13.5 m

Note: This point consists of 2 bars with one sitting approx. 60 cm above the lower.

Catwalk 2 down stage side (LX2)

Setting Line to lighting bar: Lower Bar is 8.9 m at 32 degrees

Usable bar width: 14 m

Note: This point consists of 2 bars with one sitting approx. 60 cm above the lower.

Tech Balcony Bar PS & OP

Centre Line to lighting bar: Lower Bar 10.6 m at 41 degrees

Note: This point consists of 2 bars with one sitting approx. 60 cm above the lower.

FOH Boom (PS & OP)

Setting Line to FOH Perch: 12.1 m at 42 degrees

Distances are to the highest downstage point of boom or perch.

2 x 3 metre push up stands

2 x 3 metre push up stands available for side stage lamp hanging.

Control

Lighting desk: LSC Maxim XXL

Control channels: 120

Signal distribution: 2 X DMX universe streams

Dimmer Racks

2 x EKO 24 Dimmer Channels

4 x Solution Cool 12 Dimmer Channels

Total Dimmers: 96

Dimmer Locations: Tech Balcony PS

Stage Luminare

Profiles

| Make | Model | Angle | Detail / Accessories | Watt | Total |
|------|----------|--------|---------------------------|------|-----------|
| SPX | SPX1535 | 35 deg | colour frame and shutters | 800W | 28 |
| SPX | SPX25 50 | 50 deg | colour frame and shutters | 800w | 16 |

Fresnel's

| Make | Model | Detail / Accessories | Watt | Total |
|---------|-------------|--|-------|-----------|
| Rama | 16RAFR175PL | colour frame barn doors & Gobo Holders | 1200W | 24 |
| Selecon | 12ACFPL | colour frame barn doors & Gobo Holders | 650W | 6 |

PC

| Make | Model | Detail / Accessories | Watt | Total |
|---------|-------|----------------------|-----------|----------|
| Selecon | | colour frame | 1200 W | 6 |

Par Cans

| Make | Model | Angle | Detail / Accessories | Watt | Total |
|------|--------------|-------|----------------------|------|-----------|
| KUPO | MultiPAR HOG | | colour frame. | | 16 |

Cyc Battens

| Make | Model | Detail / Accessories | Watt | Total |
|------|------------|----------------------|-----------|----------|
| LUI | 0LUICYC3PL | 3-way Cyc Batten | 1000 W | 6 |

Additional Lighting

| Item | Make | Model | Detail / Accessories | Watt | Total |
|-------------|------|-------|----------------------|------|----------|
| Mirror Ball | | | With Motor | | 1 |

Power:

3 Phase Outlets
2 D.S OP
2 D.S.P
1 US OP
1 US P

Cabling:

240v extension cable

The theatre has a good stock of extension leads to accommodate standard use and needs

Looms : None

3 Phase Extensions: None

Audio

Control Positions

Control Desk: Rear centre of stalls open space dedicated position

Control

Primary Mixer: Allen Heath 24 channel 4 stereo outputs 6 aux sends
phantom power

EQ: dbx 2231

FX: Yamaha SPX2000

Compression / Limiter / Gates: dbx 166XL

Microphones:

| Make | Model | Detail / Accessories | Use | Total |
|----------------|------------|----------------------|------------|----------|
| Shure | Beta 58A | | Vocals | 6 |
| Audio Technica | ATM450 | | Instrument | 6 |
| Shure | MX412S/S | Lectern Microphone | Vocals | 1 |
| Sennheiser | ME2 | Clip on Lapel | Vocals | 2 |
| Sennheiser | 100-835-G3 | Hand held Wireless | Vocals | 2 |

Line Patching:

| Location | Quantity | Detail |
|----------------------------------|----------|---------------------|
| Downstage P | 8 | 6 sends, 2 returns |
| Downstage OP | 8 | 6 sends, 2 returns |
| Downstage P stage floor trap | 8 | 6 sends, 2 returns |
| Downstage OP stage Floor trap | 8 | 6 sends 2 returns |
| Upstage P stage floor trap | 4 | 3 sends, 1 return |
| Upstage OP stage floor trap | 4 | 3 sends, 1 return |
| Rehearsal position | 4 | 3 sends, 1 return |
| Catwalks | 15 | 10 sends, 5 returns |
| Balcony P | 4 | 3 sends, 1 return |
| Balcony OP | 4 | 3 sends, 1 return |

Audio Visual

Projector:

| Type | Model | Detail / Accessories | Total |
|------------------------|------------|----------------------|----------|
| Sanyo Projector | PLC-XP200L | | 1 |
| Sanyo Short throw lens | W31 | | 1 |

Screens:

Projection Screen: Theatre Cyclorama is used as main screen.

Screen dimensions: 10 m wide X 7.5 m high

Projector Rigging Points: Permanently rigged centre bottom of Catwalk #1 down stage of curtain track

A portable screen (1.8m x 1.4m) is available on request

Backstage

Communications:

Stage Managers Desk: The Stage Managers desk is in Prompt corner. It is fitted with CCTV monitoring, Talkback to Control Desk and Dressing/Green Rooms and Paging to Foyer.

Dressing Rooms:

| Dressing Room | Capacity | Toilets | Shower | Details |
|-----------------|----------|---------|--------|--|
| Principal 1 | 4 | M/F | YES | Principal.1 and Principal.2 can be |
| Principal 2 | 4 | M/F | YES | joined or divided as needed |
| Dressing room 3 | 30 | M/F | YES | D.R.1 and D.R.2 can be joined or |
| Dressing room 4 | 35 | M/F | YES | divided as needed |
| Dressing room 5 | 10 | M/F | YES | Upstairs next to Black Box Space. Can be used by arrangement |
| Black Box | 100 | No | No | This Space can be used for large groups by arrangement |

All dressing rooms and Green Rooms have CCTV and Audio Stage relay.

Stage Door

Access: Stage door is next to loading dock on Matson Drive. Access needs to be controlled by personnel.

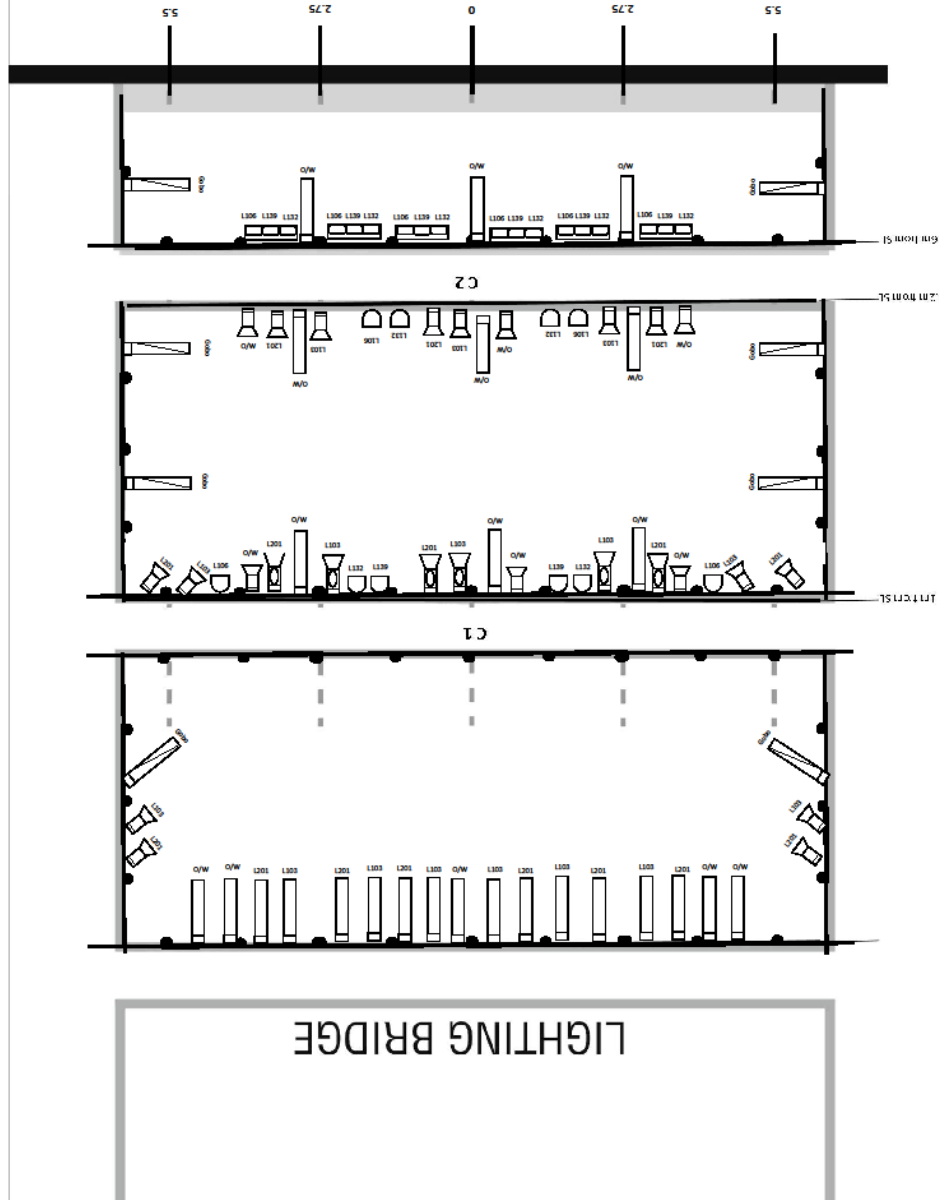
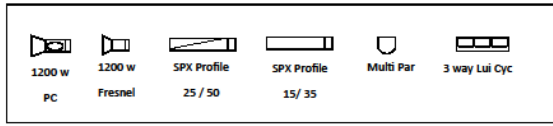
Standard Lighting Plan - Main Theatre

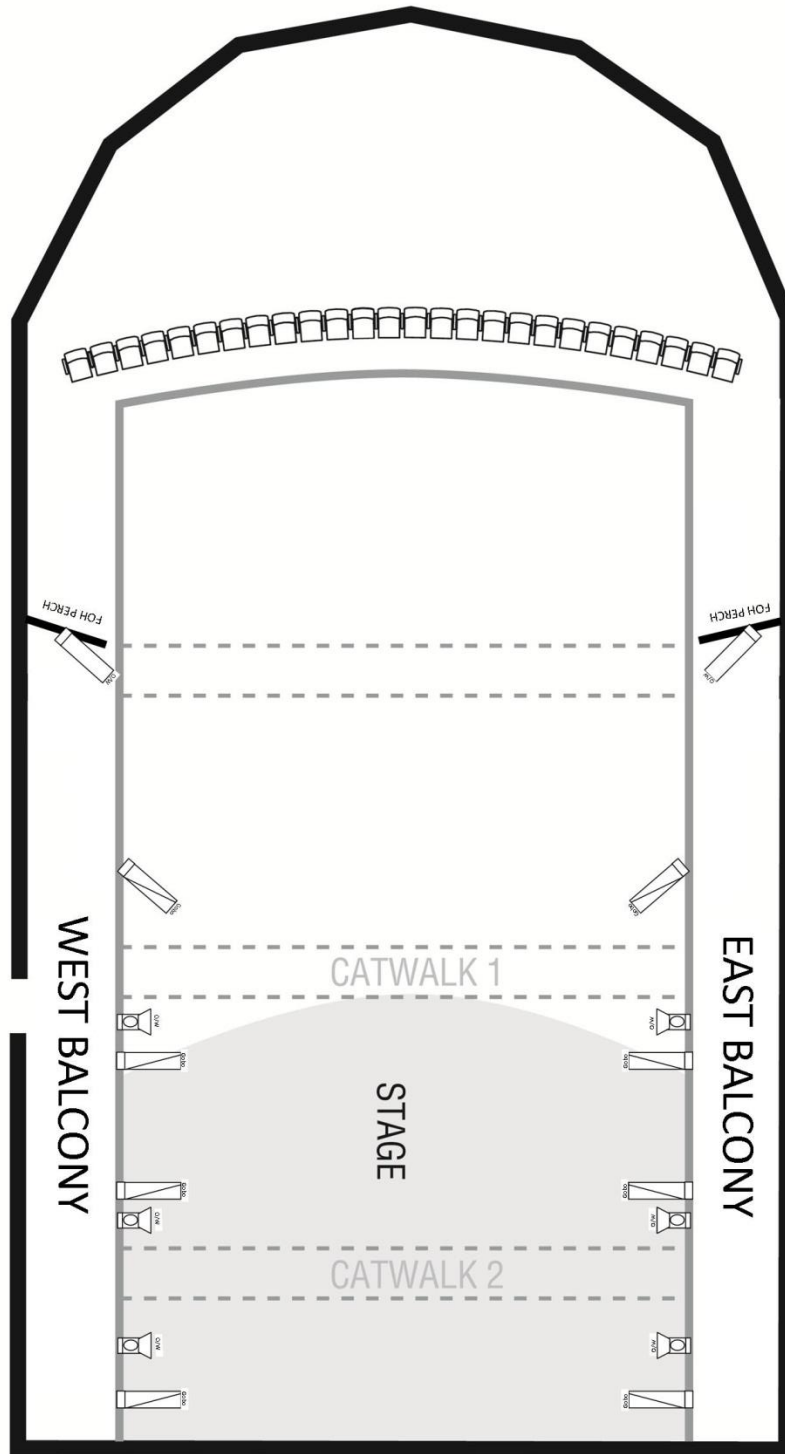


LX Standard Rig

Version 3

February 2013





LX Distances

